

Fancy Plants





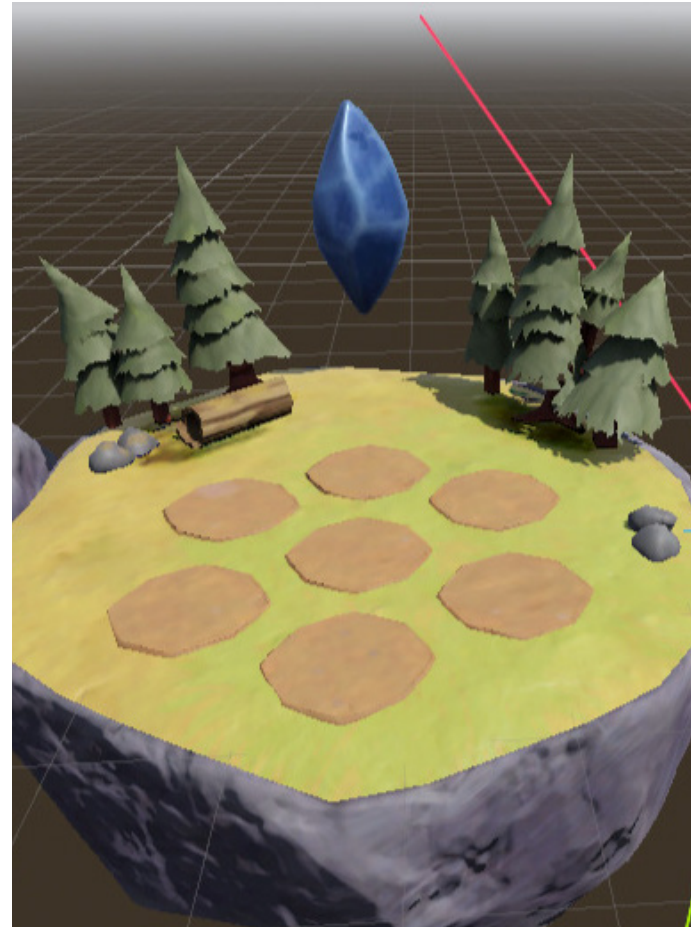
Fancy Plants is a fantasy plant simulation game where players cultivate plants that react to real-world weather. The objective is to grow and care for diverse plants and cross-breed them to recreate rare fancy plants. Players explore nature to discover new seeds and improve their gardens.

The main activities include planting, caring, collecting, experimenting with cross-breeding, and building a magical ecosystem that feels alive. The game takes place in the real world, connected to a hidden fantasy realm of magical plants.

On the real-world map influenced by real weather conditions, floating islands with magical gardens appear. Each island is connected to a physical location and can be discovered by other players. Players can interact with their gardens, visit other players' gardens in nature, or send their avatar to friends' islands, creating a shared world experience.

Story

Once upon a time the magical world of Fancy plants was united and strong. But ecological challenges divided all the plants to 6 families (crystal, volcanic, candy, angelic, darkbloom, sparkling). There are garden keepers who are taking care of plants and cross-breed them in order to get fancy plants. Each garden is influenced by the real weather conditions. By cooperating with other keepers and discovering plants crossbreeding and mutations, keepers can grow new, fancier plants. The game's meta-goal is to breed the legendary plants with characteristics from all 6 families and unite the magical world of plants.





Shop

In-game Currency: Amber Stones



The shop allows players to sell seeds, crops, and gardening tools. Using Amber Stones, players can purchase new seeds and helpful tools such as umbrellas, woolen scarves, cooling fans, glow lamps, sunglasses, anti-pest spray, and a growing cup of coffee.



Characters



Cevin

A half-bitten cactus and the shop assistant. Cevin trades seeds, plants, and tools, and always has something curious in stock.

Tim & Tak

Twin assistants at the cross-breeding station. They help players combine plants and experiment with new hybrids.



Ms Lacey

A scientist and the head of the Herbarium. She studies plant families, mutations, and records every new species discovered.



Pigeon

(Player Avatar)

A curious pigeon representing the player. It travels between gardens, delivers seeds, and explores the world.

Plants Collection



Sparkling Pumpkin

A cosmic pumpkin filled with swirling stardust. Its surface shifts like a night sky in motion.



Crystal Cactus

A faceted cactus formed of crystal shards. It reflects light and grows stronger in clear, cold weather.

Volcanic Hibiskus

A fiery bloom with magma veins and smoking petals. It thrives in heat and harsh conditions.



Angelic Bellflower

A radiant flower with iridescent petals. It changes color with the light and brings harmony to nearby plants.





Candy Corn

A sweet, striped plant with bright candy layers. It flourishes in calm, sunny weather.



Legendary Tree

A mythical tree combining traits of all plant families. Its growth marks the restoration of balance in the plant world.

Darkbloom

A shadowy night-blooming plant with dark petals and a faint inner glow.



Strawberry

A cheerful fruit plant producing bright red berries. It grows best with gentle care and stable conditions.





Dandelion

A resilient plant that spreads easily and adapts to changing environments.



Monstera

A lush tropical plant with large split leaves, thriving in warm and humid climates.

Aloe Vera

A sturdy healing plant that stores water and survives dry conditions.



Crossbreed Plant

A unique hybrid created by combining two plants. Its form and properties reflect its mixed origins.



Scan the QR code to step into
the world of Fancy Plants:



Hochschule der Medien
WS 25/26