

Cinematography in machine style short films

Artificial intelligence stylistic possibilities

ARE YOU **TRAINING AI** FOR A
CINEMATOGRAPHIC DISCOURSE OR AI
IS SHAPING YOUR **CINEMATOGRAPHY**?

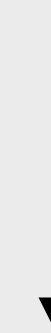
Tools



Cinematography history



Discourse: Use of Visual Elements



What kind of stories are been telling?

What visual elements are the most trend?

What kind of meanings are the most common?

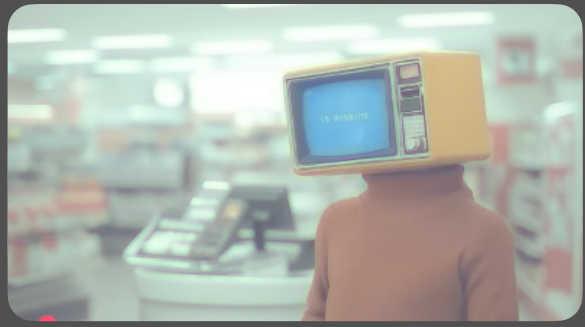
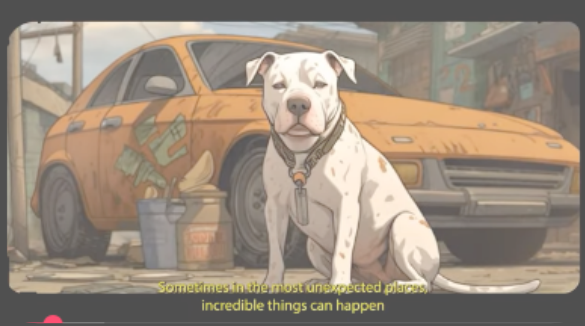
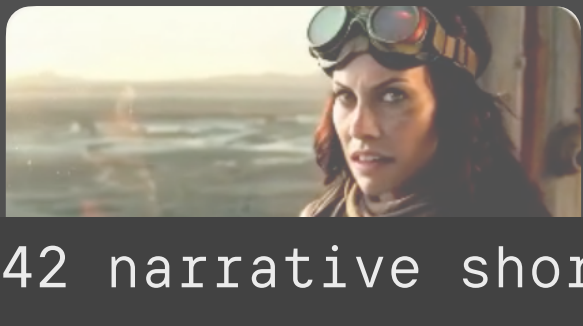
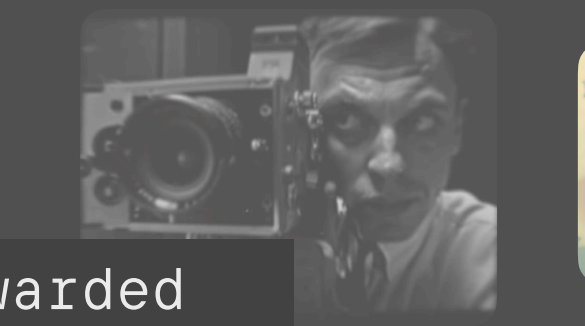
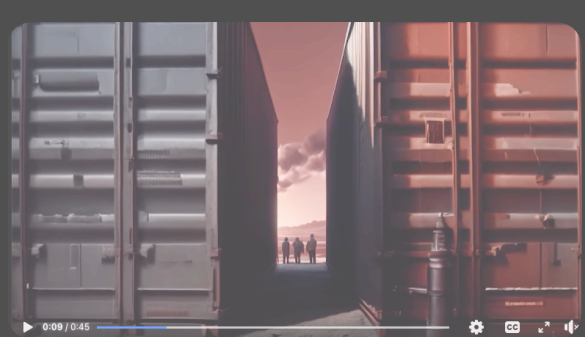
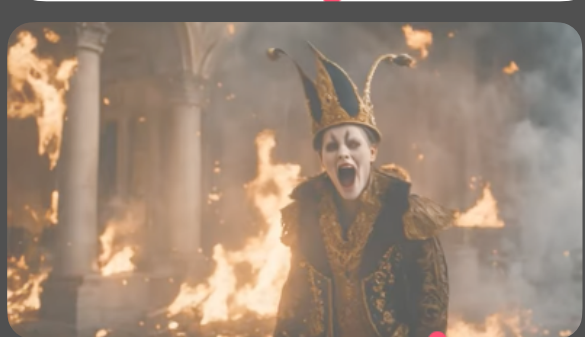
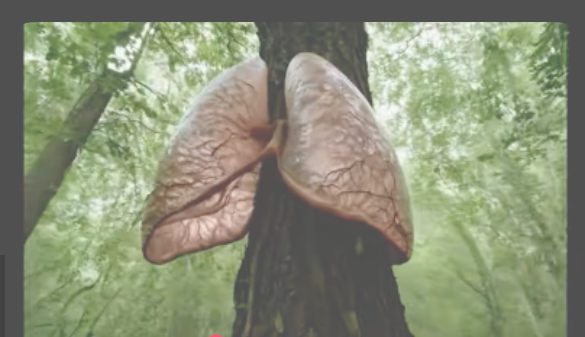
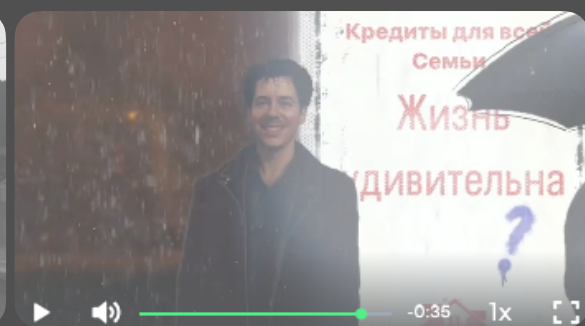
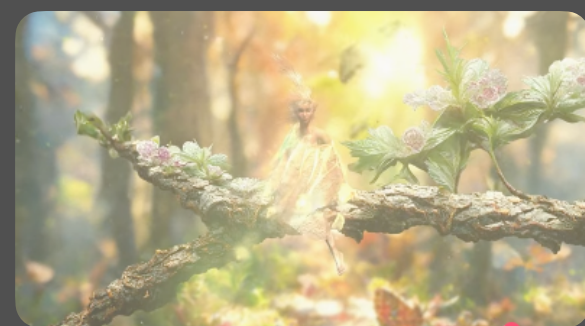
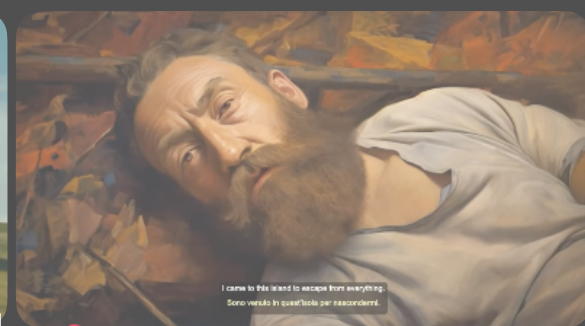
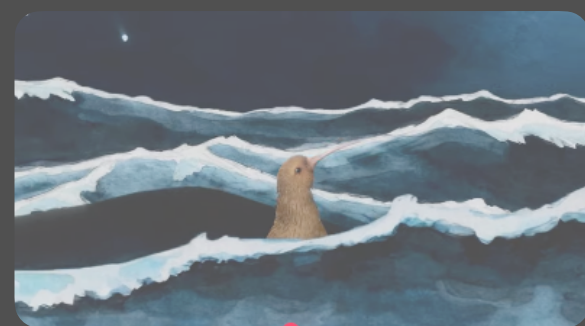
THE SAMPLE

2024

14 festivals

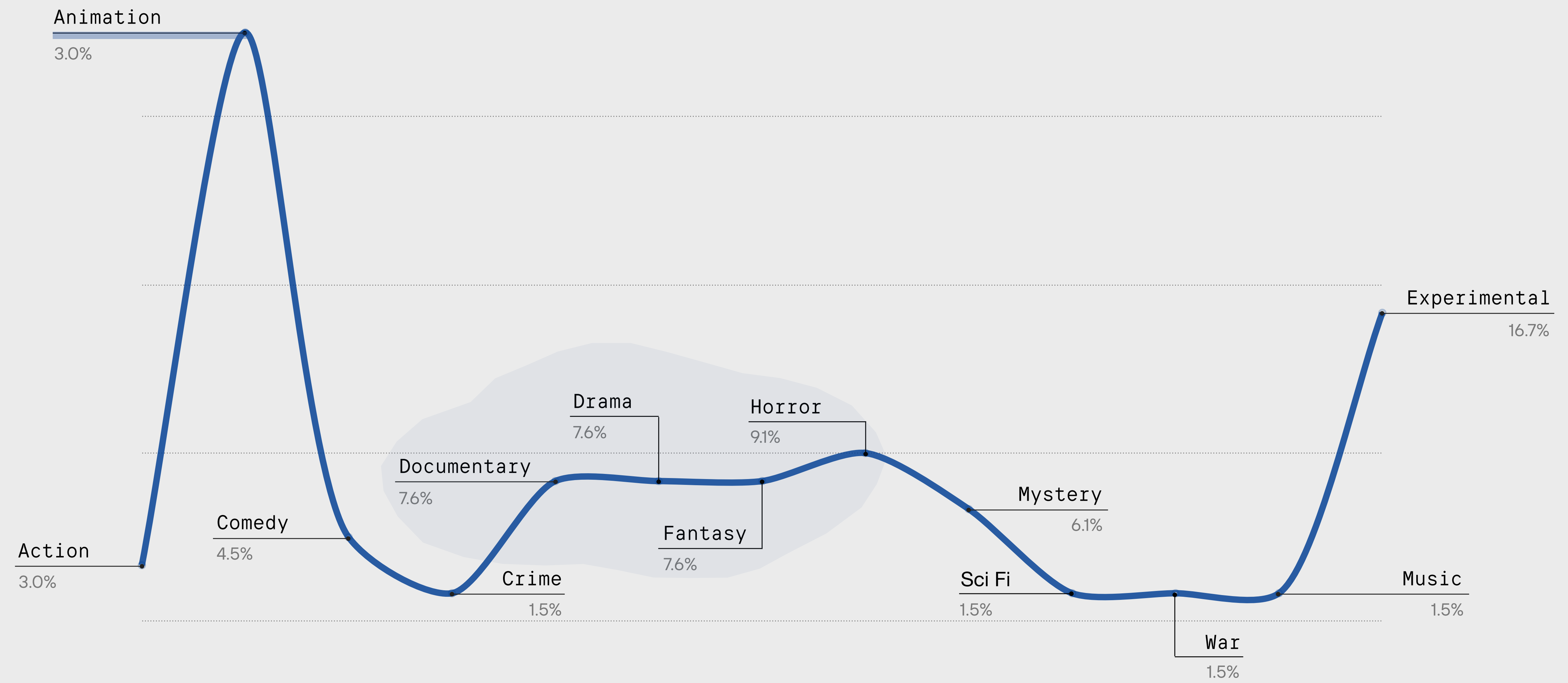
82 short films awarded

42 narrative short films



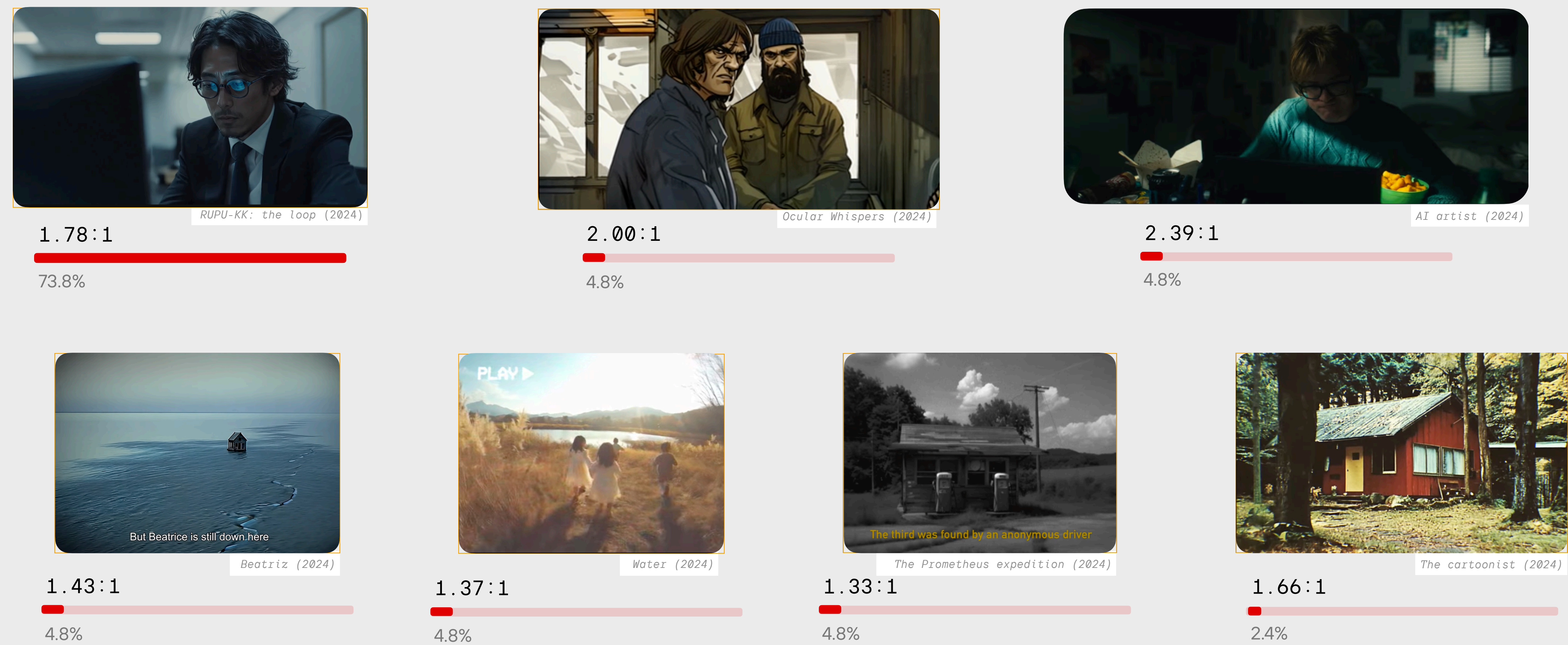
CONTENT

Genre



CHARACTERISTICS OF THE MEDIUM

Aspect ratio



* Mixed aspect ratios are also present in the sample

CHARACTERISTICS OF THE MEDIUM

Focus



54.8%

Rack focus | Shallow focus | Selective focus



You are. Unfortunately. An A.I. Artist (2024)



Mother (2024)



Mnemonade (2024)



One more pumpkin (2024)



Broccoligeddon (2024)



Get big (2024)

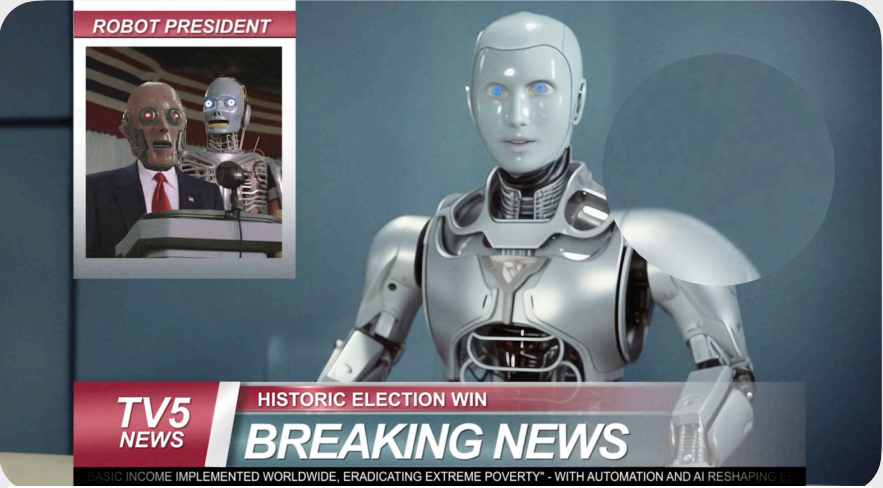
Texture



88.1%



Where do Grandmas go when they get lost? (2024)



Robort (2024)



Treta (2024)



The Prometheus expedition (2024)



Water (2024)



One with nature (2024)

CHARACTERISTICS OF THE MEDIUM

Hallucinations

59.5%



Jinx (2024)



Jinx (2024)



Clockwork city (2024)



One more pumpkin (2024)



Robort (2024)



The dawn of creation (2024)

CHARACTERISTICS OF THE MEDIUM

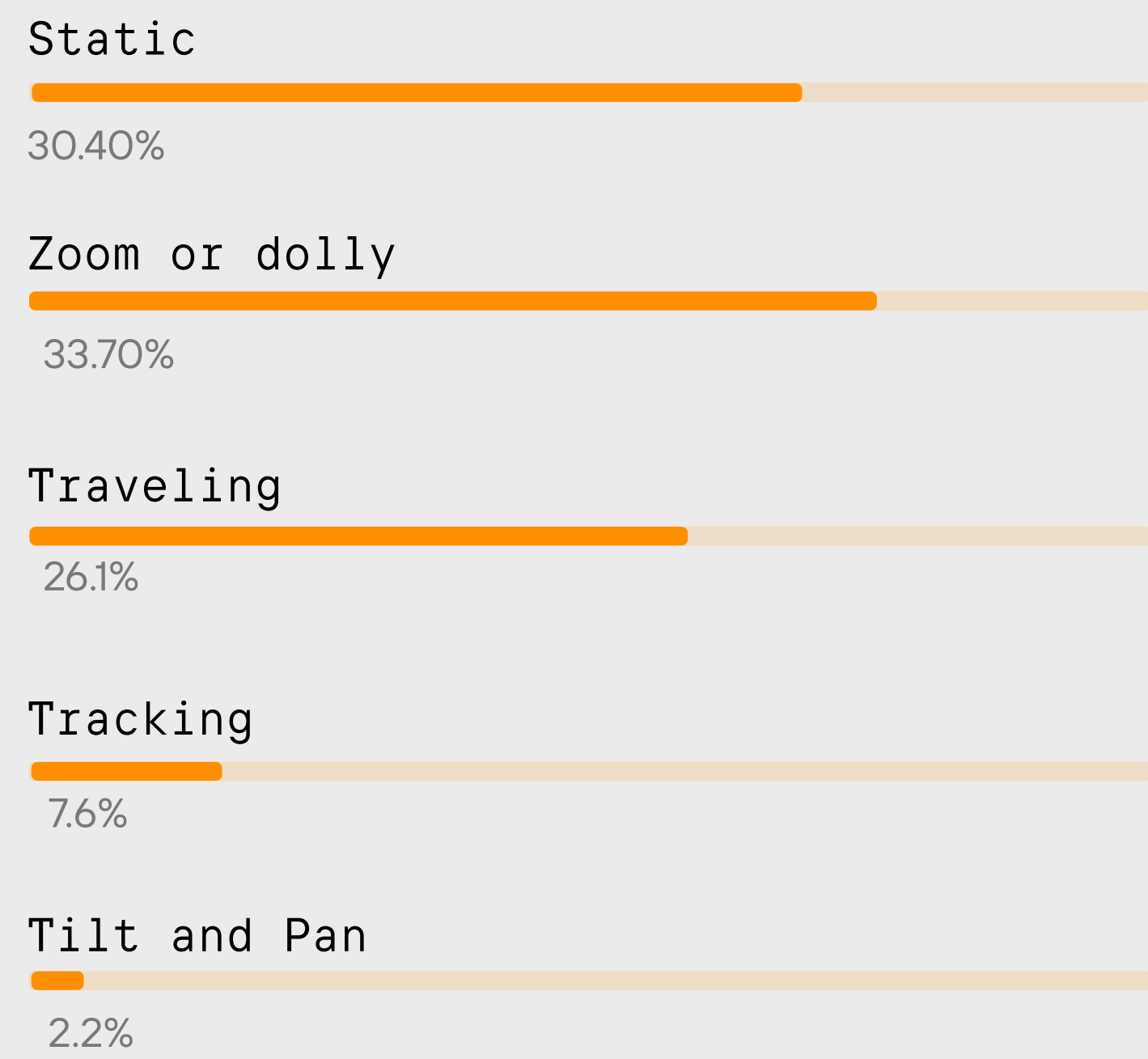
Hallucinations



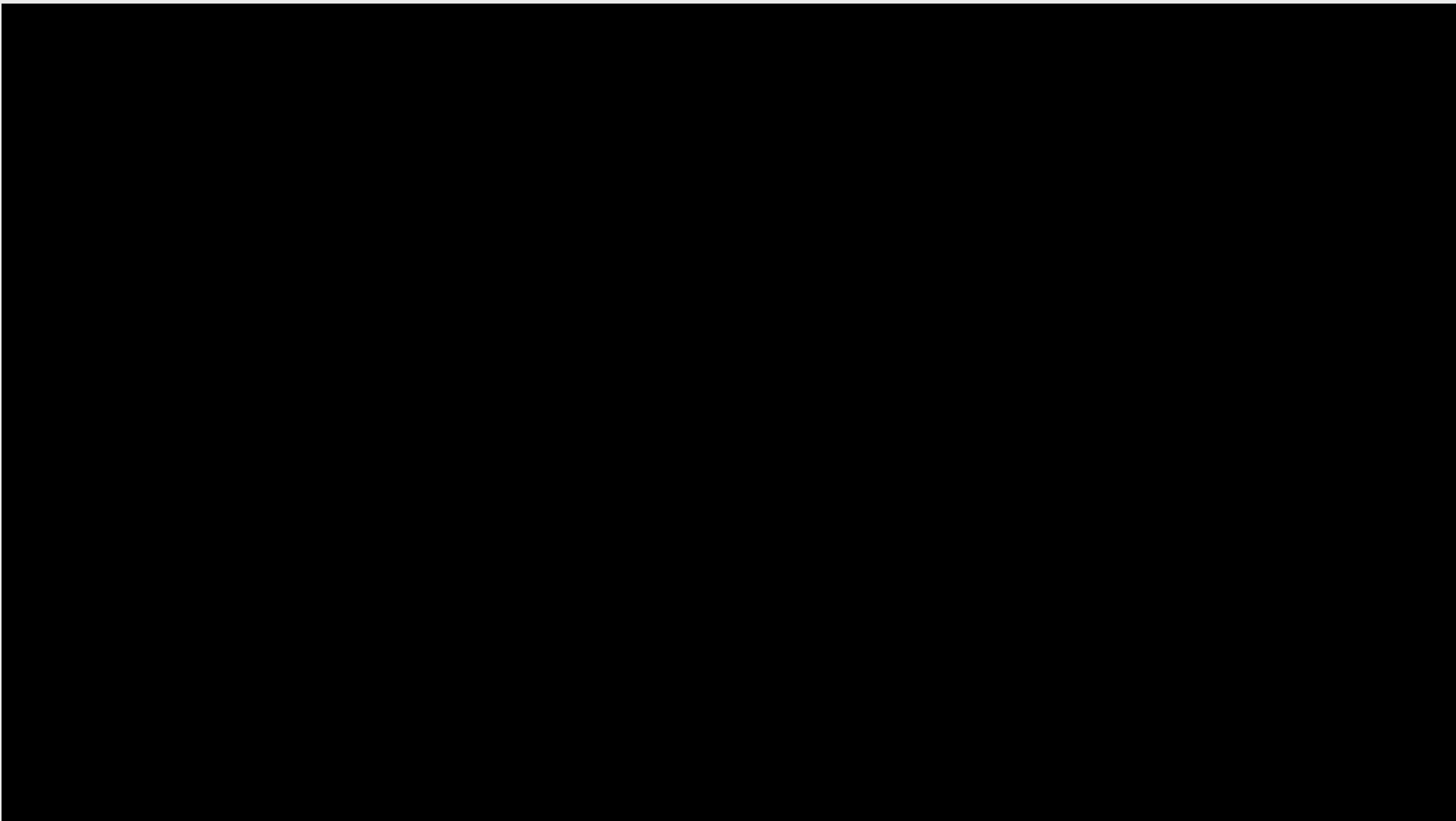
Hallucinations
(sideways moves)

SPATIAL ELEMENTS

Camera movements



*Free camera movement



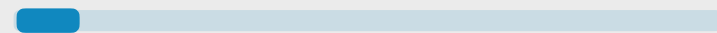
OPTICAL ELEMENTS

Lenses



Mnemonade (2024)

Telephoto



8.2%



Mnemonade (2024)

Standard



73.5%



Mnemonade (2024)

Wide



18.4%



You are, unfortunately, an A.I. artist (2024)



You are, unfortunately, an A.I. artist (2024)

OPTICAL ELEMENTS

Aberrations

60%

- Spherical
- Chromatic
- Coma
- Geometric distortion
- Light Leake
- Vignetting
- Bokeh
- Flare
- Field curvature
- Astigmatism



Nightwatch (2024)



One wau (2024)



The Prometheus expedition (2024)



One wau (2024)



The Prometheus expedition (2024)



I want to go home (2024)



A tree once grew here (2024)



The Prometheus expedition (2024)



Night watch (2024)

LIGHTING ELEMENTS



Mother (2024)



Be an elephant (2024)



Treta (2024)

Natural light: Daylight



58.2%

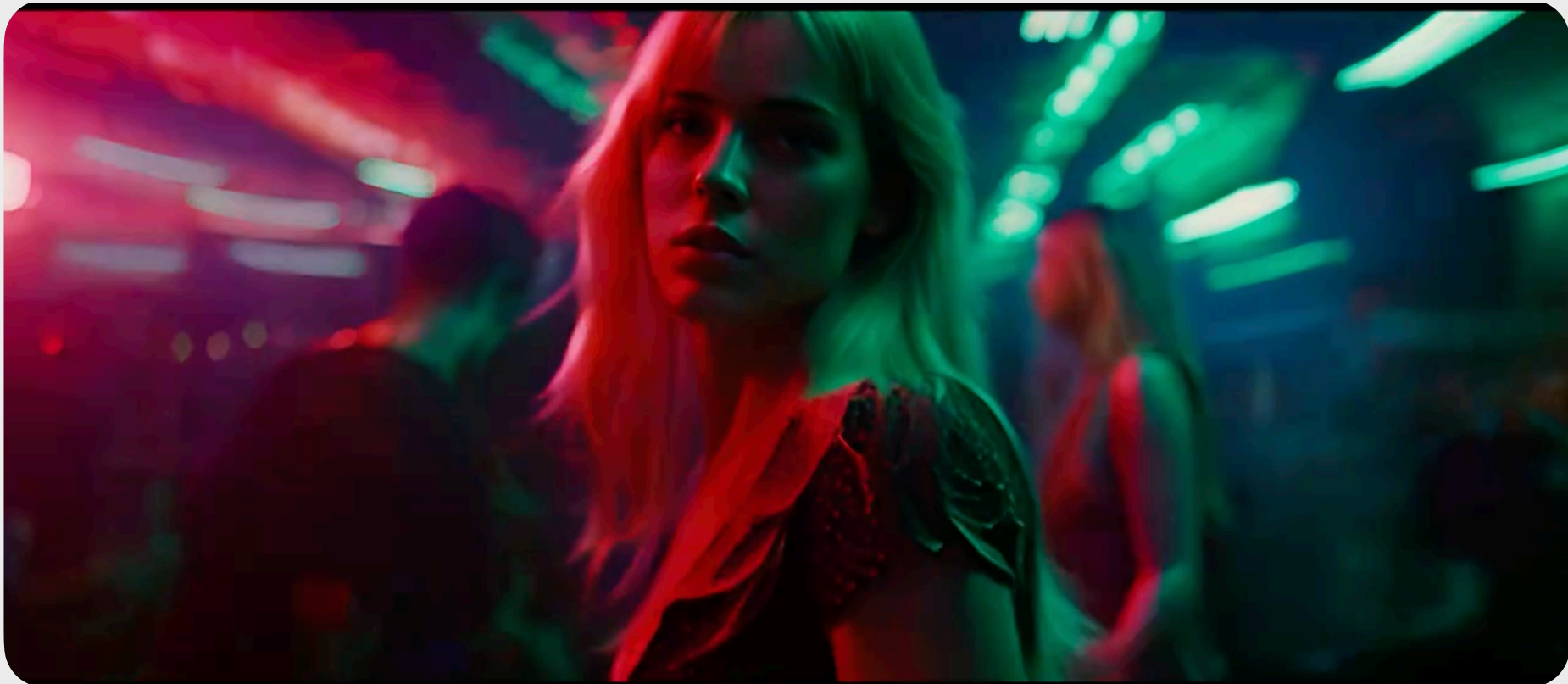
Artificial light



41.8%



Rupu-kk: the Loop (2024)



The abyss (2024)

ARE YOU **TRAINING AI** FOR A
CINEMATOGRAPHIC DISCOURSE OR AI IS
SHAPING YOUR **CINEMATOGRAPHY**?

The tools, in particular gen AI **dialogue** with
the way we use the cinematographic
elements

HOW DOES GEN AI "STYLE" INFLUENCE
THE CREATIVE POSSIBILITIES OF THE
CINEMATIC IMAGE?

Thanks

Cristina Angeles Huesca

Cinematographer Lecturer | Researcher
Communication and Arts Faculty, Nebrija University

cangeles@nebrija.es
criss.huesca@gmail.com